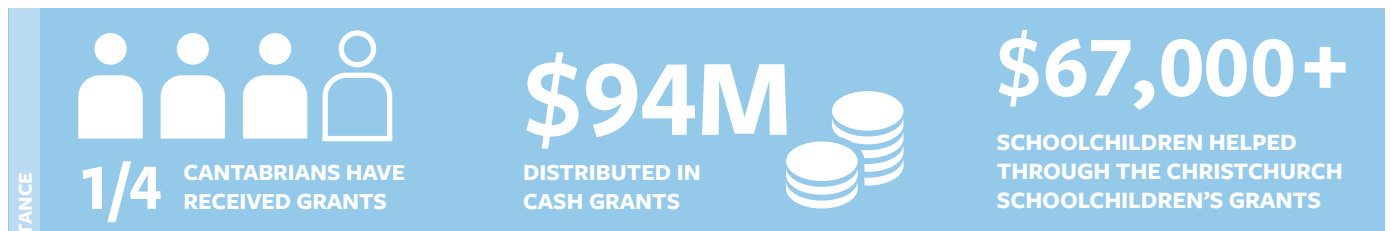
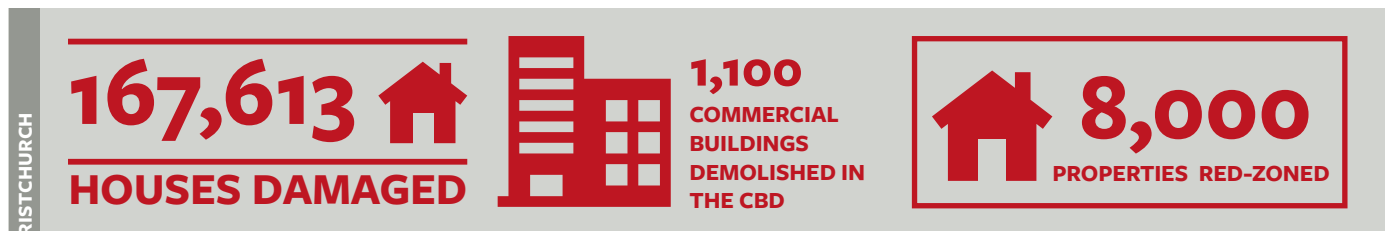


New Zealand Red Cross Christchurch Earthquake Recovery 22 February 2011 – August 2015



*ALL FIGURES CORRECT AS AT 1 AUGUST 2015

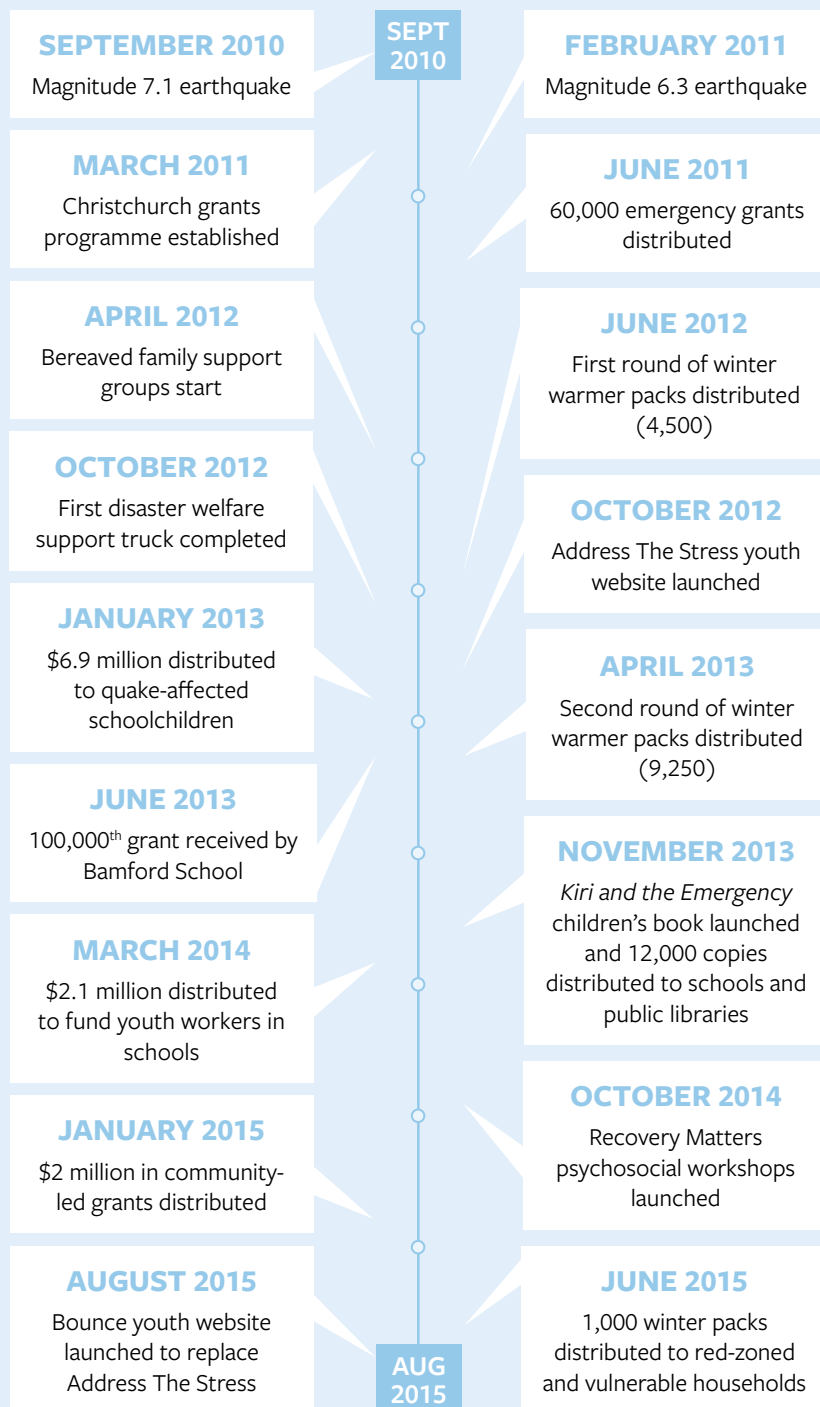
“ New Zealand Red Cross is still committed to supporting community recovery in greater Christchurch, not just because helping people deal with disasters is a Red Cross priority around the globe, but because we are part of the Christchurch community. ”

TONY PAINE, New Zealand Red Cross Secretary General

“ Even now, more than four years on from the quakes, many people are still on the recovery journey. While some people have overcome obstacles, reconstructed their lives and have largely moved on, others are still experiencing frustration, a sense of loss, red-tape, exhaustion, stress and disillusionment. New Zealand Red Cross has a deep sense of duty to help those people. ”

MICHAEL DONOGHUE, New Zealand Red Cross Recovery Manager

CANTERBURY EARTHQUAKES RESPONSE AND RECOVERY TIMELINE



THANKS TO OUR SUPPORTERS AND PARTNERS OF NEW ZEALAND RED CROSS WHO MADE OUR CHRISTCHURCH EARTHQUAKE RECOVERY PROGRAMME POSSIBLE.